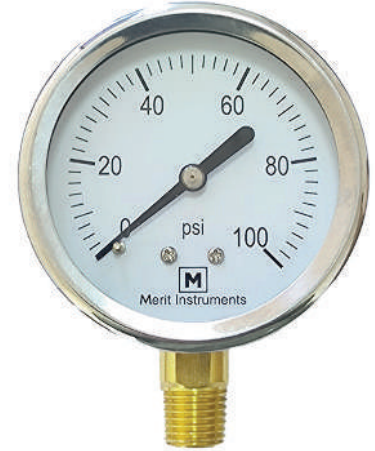


PCR SERIES LIQUID FILLED PRESSURE GAUGES

Description & Features:

- 304 stainless steel case and ring 1.5% full scale accuracy pressure gauge with single-piece brass internals and PC lens standard.
- Suitable for multiple applications where a glycerine filled pressure gauge is required to dampen the effects of vibration on pointer movement (e.g. pumps, water lines, compressors, hydraulics, etc.) allowing easier pressure reading when in operation.
- 7-year warranty*

**See Merit Instruments warranty page for full coverage information.*



Specifications:

- Dial Sizes: 1.5", 2", 2.5" and 4" dial sizes standard, other sizes available upon request.
- Dial Material: Aluminum painted white with black markings (single scale) or black and red markings (dual scale).
- Case: 304 stainless steel.
- Ring: 304 stainless steel, crimped on.
- Tube and Socket: Brass bourdon tube for ranges <1,000 psi, 304 SS for ranges >1,000 psi. One-piece brass socket standard. For Lead-Free versions, lead-free brass replaces the standard brass internals and socket.
- Lens: Polycarbonate (PC).
- Connection Size: 1/4" NPT standard. BSP, BSPT threads available. 1/2" NPT standard on 4" dial gauges with ranges =>1,000 psi.
- Connection Location: Bottom and Center Back connection.
- Enclosure Rating: IP65
- Maximum Operating Pressure: 75% of full-scale range.
- Operating/Ambient Temperature: -4/150F, -20/65 C.
- Ranges: Available in single scale psi, dual scale psi/Bar or dual scale psi/kPa. Other ranges available upon request.
- Customization: Available upon request.

PCR SERIES LIQUID FILLED PRESSURE GAUGES

Liquid Filled, SS case, Brass internals, crimped-on ring, PC lens 1.5" Dial, 1/4" NPT Bottom Winters PFQ Equivalent P = Pressure Gauge C= General Purpose R = Crimped Ring glycerine filled B = Brass internals 1 = 1.5" Dial 0 = 1/4" NPT 100 Codes = psi only 200 Codes = psi/Bar 300 Codes = psi/kPa	PSI Ranges	Code	PSI/Bar Ranges	Code	PSI/kPa Ranges	Code
	Vacuum	PCRB10100	Vacuum/Bar	PCRB10200	Vacuum/kPa	PCRB10300
	15 psi	PCRB10101	15 psi/Bar	PCRB10201	0-15 psi/kPa	PCRB10301
	30 psi	PCRB10102	30 psi/Bar	PCRB10202	0-30 psi/kPa	PCRB10302
	60 psi	PCRB10103	60 psi/Bar	PCRB10203	0-60 psi/kPa	PCRB10303
	100 psi	PCRB10104	100 psi/Bar	PCRB10204	0-100 psi/kPa	PCRB10304
	160 psi	PCRB10105	160 psi/Bar	PCRB10205	0-160 psi/kPa	PCRB10305
	200 psi	PCRB10106	200 psi/Bar	PCRB10206	0-200 psi/kPa	PCRB10306
	300 psi	PCRB10107	300 psi/Bar	PCRB10207	0-300 psi/kPa	PCRB10307
	600 psi	PCRB10108	600 psi/Bar	PCRB10208	0-600 psi/kPa	PCRB10308
	1000 psi	PCRB10109	1000 psi/Bar	PCRB10209	0-1000 psi/kPa	PCRB10309
	1500 psi	PCRB10110	1500 psi/Bar	PCRB10210	0-1500 psi/kPa	PCRB10310
	2000 psi	PCRB10111	2000 psi/Bar	PCRB10211	0-2000 psi/kPa	PCRB10311
3000 psi	PCRB10112	3000 psi/Bar	PCRB10212	0-3000 psi/kPa	PCRB10312	
5000 psi	PCRB10113	5000 psi/Bar	PCRB10213	0-5000 psi/kPa	PCRB10313	

Liquid Filled, SS case, Brass internals, crimped-on ring, PC lens 1.5" Dial, 1/4" NPT Back Connection Winters PFQ Equivalent P = Pressure Gauge C= General Purpose R = Crimped Ring glycerine filled B = Brass internals 1 = 1.5" Dial 0 = 1/4" NPT 500 Codes = psi only 600 Codes = psi/Bar 700 Codes = psi/kPa	PSI Ranges	Code	PSI/Bar Ranges	Code	PSI/kPa Ranges	Code
	Vacuum	PCRB10500	Vacuum/Bar	PCRB10600	Vacuum/kPa	PCRB10700
	15 psi	PCRB10501	15 psi/Bar	PCRB10601	0-15 psi/kPa	PCRB10701
	30 psi	PCRB10502	30 psi/Bar	PCRB10602	0-30 psi/kPa	PCRB10702
	60 psi	PCRB10503	60 psi/Bar	PCRB10603	0-60 psi/kPa	PCRB10703
	100 psi	PCRB10504	100 psi/Bar	PCRB10604	0-100 psi/kPa	PCRB10704
	160 psi	PCRB10505	160 psi/Bar	PCRB10605	0-160 psi/kPa	PCRB10705
	200 psi	PCRB10506	200 psi/Bar	PCRB10606	0-200 psi/kPa	PCRB10706
	300 psi	PCRB10507	300 psi/Bar	PCRB10607	0-300 psi/kPa	PCRB10707
	600 psi	PCRB10508	600 psi/Bar	PCRB10608	0-600 psi/kPa	PCRB10708
	1000 psi	PCRB10509	1000 psi/Bar	PCRB10609	0-1000 psi/kPa	PCRB10709
	1500 psi	PCRB10510	1500 psi/Bar	PCRB10610	0-1500 psi/kPa	PCRB10710
	2000 psi	PCRB10511	2000 psi/Bar	PCRB10611	0-2000 psi/kPa	PCRB10711
3000 psi	PCRB10512	3000 psi/Bar	PCRB10612	0-3000 psi/kPa	PCRB10712	
5000 psi	PCRB10513	5000 psi/Bar	PCRB10613	0-5000 psi/kPa	PCRB10713	

PCR SERIES LIQUID FILLED PRESSURE GAUGES

Liquid Filled, SS case, Brass internals, crimped-on ring, PC lens 2" Dial, 1/4" NPT Bottom Winters PFQ Equivalent P = Pressure Gauge C= General Purpose R = Crimped Ring glycerine filled B = Brass internals 2 = 2" Dial 0 = 1/4" NPT 100 Codes = psi only 200 Codes = psi/Bar 300 Codes = psi/kPa	PSI Ranges	Code	PSI/Bar Ranges	Code	PSI/kPa Ranges	Code
	Vacuum	PCRB20100	Vacuum/Bar	PCRB20200	Vacuum/kPa	PCRB20300
	15 psi	PCRB20101	15 psi/Bar	PCRB20201	0-15 psi/kPa	PCRB20301
	30 psi	PCRB20102	30 psi/Bar	PCRB20202	0-30 psi/kPa	PCRB20302
	60 psi	PCRB20103	60 psi/Bar	PCRB20203	0-60 psi/kPa	PCRB20303
	100 psi	PCRB20104	100 psi/Bar	PCRB20204	0-100 psi/kPa	PCRB20304
	160 psi	PCRB20105	160 psi/Bar	PCRB20205	0-160 psi/kPa	PCRB20305
	200 psi	PCRB20106	200 psi/Bar	PCRB20206	0-200 psi/kPa	PCRB20306
	300 psi	PCRB20107	300 psi/Bar	PCRB20207	0-300 psi/kPa	PCRB20307
	600 psi	PCRB20108	600 psi/Bar	PCRB20208	0-600 psi/kPa	PCRB20308
	1000 psi	PCRB20109	1000 psi/Bar	PCRB20209	0-1000 psi/kPa	PCRB20309
	1500 psi	PCRB20110	1500 psi/Bar	PCRB20210	0-1500 psi/kPa	PCRB20310
	2000 psi	PCRB20111	2000 psi/Bar	PCRB20211	0-2000 psi/kPa	PCRB20311
3000 psi	PCRB20112	3000 psi/Bar	PCRB20212	0-3000 psi/kPa	PCRB20312	
5000 psi	PCRB20113	5000 psi/Bar	PCRB20213	0-5000 psi/kPa	PCRB20313	

Liquid Filled, SS case, Brass internals, crimped-on ring, PC lens 2" Dial, 1/4" NPT Back Connection Winters PFQ Equivalent P = Pressure Gauge C= General Purpose R = Crimped Ring glycerine filled B = Brass internals 2 = 2" Dial 0 = 1/4" NPT 500 Codes = psi only 600 Codes = psi/Bar 700 Codes = psi/kPa	PSI Ranges	Code	PSI/Bar Ranges	Code	PSI/kPa Ranges	Code
	Vacuum	PCRB20500	Vacuum/Bar	PCRB20600	Vacuum/kPa	PCRB20700
	15 psi	PCRB20501	15 psi/Bar	PCRB20601	0-15 psi/kPa	PCRB20701
	30 psi	PCRB20502	30 psi/Bar	PCRB20602	0-30 psi/kPa	PCRB20702
	60 psi	PCRB20503	60 psi/Bar	PCRB20603	0-60 psi/kPa	PCRB20703
	100 psi	PCRB20504	100 psi/Bar	PCRB20604	0-100 psi/kPa	PCRB20704
	160 psi	PCRB20505	160 psi/Bar	PCRB20605	0-160 psi/kPa	PCRB20705
	200 psi	PCRB20506	200 psi/Bar	PCRB20606	0-200 psi/kPa	PCRB20706
	300 psi	PCRB20507	300 psi/Bar	PCRB20607	0-300 psi/kPa	PCRB20707
	600 psi	PCRB20508	600 psi/Bar	PCRB20608	0-600 psi/kPa	PCRB20708
	1000 psi	PCRB20509	1000 psi/Bar	PCRB20609	0-1000 psi/kPa	PCRB20709
	1500 psi	PCRB20510	1500 psi/Bar	PCRB20610	0-1500 psi/kPa	PCRB20710
	2000 psi	PCRB20511	2000 psi/Bar	PCRB20611	0-2000 psi/kPa	PCRB20711
3000 psi	PCRB20512	3000 psi/Bar	PCRB20612	0-3000 psi/kPa	PCRB20712	
5000 psi	PCRB20513	5000 psi/Bar	PCRB20613	0-5000 psi/kPa	PCRB20713	

PCR SERIES LIQUID FILLED PRESSURE GAUGES

2.5" Dial Pressure Gauge brass internals, glycerine filled 1/4" NPT bottom connection PCR = Gauge Series G = Glycerine Filled Brass internals A = 2.5" Dial 2 = 1/4" NPT 100 Codes = psi only 200 Codes = psi/Bar 300 Codes = psi/kPa	PSI Ranges	Code	PSI/Bar Ranges	Code	PSI/kPa Ranges	Code
	Vacuum	PCRGA2100	Vacuum/Bar	PCRGA2200	Vacuum/kPa	PCRGA2300
	15 psi	PCRGA2101	15 psi/Bar	PCRGA2201	0-15 psi/kPa	PCRGA2301
	30 psi	PCRGA2102	30 psi/Bar	PCRGA2202	0-30 psi/kPa	PCRGA2302
	60 psi	PCRGA2103	60 psi/Bar	PCRGA2203	0-60 psi/kPa	PCRGA2303
	100 psi	PCRGA2104	100 psi/Bar	PCRGA2204	0-100 psi/kPa	PCRGA2304
	160 psi	PCRGA2105	160 psi/Bar	PCRGA2205	0-160 psi/kPa	PCRGA2305
	200 psi	PCRGA2106	200 psi/Bar	PCRGA2206	0-200 psi/kPa	PCRGA2306
	300 psi	PCRGA2107	300 psi/Bar	PCRGA2207	0-300 psi/kPa	PCRGA2307
	600 psi	PCRGA2108	600 psi/Bar	PCRGA2208	0-600 psi/kPa	PCRGA2308
	1000 psi	PCRGA2109	1000 psi/Bar	PCRGA2209	0-1000 psi/kPa	PCRGA2309
	1500 psi	PCRGA2110	1500 psi/Bar	PCRGA2210	0-1500 psi/kPa	PCRGA2310
	2000 psi	PCRGA2111	2000 psi/Bar	PCRGA2211	0-2000 psi/kPa	PCRGA2311
	3000 psi	PCRGA2112	3000 psi/Bar	PCRGA2212	0-3000 psi/kPa	PCRGA2312
5000 psi	PCRGA2113	5000 psi/Bar	PCRGA2213	0-5000 psi/kPa	PCRGA2313	

2.5" Dial Pressure Gauge brass internals, glycerine filled movement, 1/4" NPT center back connection PCR = Gauge Series G = Glycerine Filled Brass internals A = 2.5" Dial 2 = 1/4" NPT 500 Codes = psi only back connection 600 Codes = psi/Bar back connection 700 Codes = psi/kPa back connection	PSI Ranges	Code	PSI/Bar Ranges	Code	PSI/kPa Ranges	Code
	Vacuum	PCRGA2500	Vacuum/Bar	PCRGA2600	Vacuum/kPa	PCRGA2700
	0-15	PCRGA2501	0-15 psi/Bar	PCRGA2601	0-15 psi/kPa	PCRGA2701
	0-30	PCRGA2502	0-30 psi/Bar	PCRGA2602	0-30 psi/kPa	PCRGA2702
	0-60	PCRGA2503	0-60 psi/Bar	PCRGA2603	0-60 psi/kPa	PCRGA2703
	0-100	PCRGA2504	0-100 psi/Bar	PCRGA2604	0-100 psi/kPa	PCRGA2704
	0-160	PCRGA2505	0-160 psi/Bar	PCRGA2605	0-160 psi/kPa	PCRGA2705
	0-200	PCRGA2506	0-200 psi/Bar	PCRGA2606	0-200 psi/kPa	PCRGA2706
	0-300	PCRGA2507	0-300 psi/Bar	PCRGA2607	0-300 psi/kPa	PCRGA2707
	0-600	PCRGA2508	0-600 psi/Bar	PCRGA2608	0-600 psi/kPa	PCRGA2708
	0-1000	PCRGA2509	0-1000 psi/Bar	PCRGA2609	0-1000 psi/kPa	PCRGA2709
	0-1500	PCRGA2510	0-1500 psi/Bar	PCRGA2610	0-1500 psi/kPa	PCRGA2710
	0-2000	PCRGA2511	0-2000 psi/Bar	PCRGA2611	0-2000 psi/kPa	PCRGA2711
	0-3000	PCRGA2512	0-3000 psi/Bar	PCRGA2612	0-3000 psi/kPa	PCRGA2712
0-5000	PCRGA2513	0-5000 psi/Bar	PCRGA2613	0-5000 psi/kPa	PCRGA2713	

PCR SERIES LIQUID FILLED PRESSURE GAUGES

4" Dial Pressure Gauge brass internals, glycerine filled bottom connection PCR = Gauge Series G = Glycerine Filled Brass internals B = 4" Dial 2 = 1/4" NPT 3 = 1/2" NPT 100 Codes = psi only 200 Codes = psi/Bar 300 Codes = psi/kPa	PSI Ranges	Code	PSI/Bar Ranges	Code	PSI/kPa Ranges	Code
	Vacuum	PCRGB2100	Vacuum/Bar	PCRGB2200	Vacuum/kPa	PCRGB2300
	15 psi	PCRGB2101	15 psi/Bar	PCRGB2201	0-15 psi/kPa	PCRGB2301
	30 psi	PCRGB2102	30 psi/Bar	PCRGB2202	0-30 psi/kPa	PCRGB2302
	60 psi	PCRGB2103	60 psi/Bar	PCRGB2203	0-60 psi/kPa	PCRGB2303
	100 psi	PCRGB2104	100 psi/Bar	PCRGB2204	0-100 psi/kPa	PCRGB2304
	160 psi	PCRGB2105	160 psi/Bar	PCRGB2205	0-160 psi/kPa	PCRGB2305
	200 psi	PCRGB2106	200 psi/Bar	PCRGB2206	0-200 psi/kPa	PCRGB2306
	300 psi	PCRGB2107	300 psi/Bar	PCRGB2207	0-300 psi/kPa	PCRGB2307
	600 psi	PCRGB2108	600 psi/Bar	PCRGB2208	0-600 psi/kPa	PCRGB2308
	1000 psi	PCRGB3109	1000 psi/Bar	PCRGB3209	0-1000 psi/kPa	PCRGB3309
	1500 psi	PCRGB3110	1500 psi/Bar	PCRGB3210	0-1500 psi/kPa	PCRGB3310
	2000 psi	PCRGB3111	2000 psi/Bar	PCRGB3211	0-2000 psi/kPa	PCRGB3311
	3000 psi	PCRGB3112	3000 psi/Bar	PCRGB3212	0-3000 psi/kPa	PCRGB3312
5000 psi	PCRGB3113	5000 psi/Bar	PCRGB3213	0-5000 psi/kPa	PCRGB3313	

4" Dial Pressure Gauge brass internals, glycerine filled movement, NPT center back connection PCR = Gauge Series G = Glycerine Filled Brass internals B = 4" Dial 2 = 1/4" NPT 3 = 1/2" NPT 500 Codes = psi only back connection 600 Codes = psi/Bar back connection 700 Codes = psi/kPa back connection	PSI Ranges	Code	PSI/Bar Ranges	Code	PSI/kPa Ranges	Code
	Vacuum	PCRGB2500	Vacuum/Bar	PCRGB2600	Vacuum/kPa	PCRGB2700
	15 psi	PCRGB2501	0-15 psi/Bar	PCRGB2601	0-15 psi/kPa	PCRGB2701
	30 psi	PCRGB2502	0-30 psi/Bar	PCRGB2602	0-30 psi/kPa	PCRGB2702
	60 psi	PCRGB2503	0-60 psi/Bar	PCRGB2603	0-60 psi/kPa	PCRGB2703
	100 psi	PCRGB2504	0-100 psi/Bar	PCRGB2604	0-100 psi/kPa	PCRGB2704
	160 psi	PCRGB2505	0-160 psi/Bar	PCRGB2605	0-160 psi/kPa	PCRGB2705
	200 psi	PCRGB2506	0-200 psi/Bar	PCRGB2606	0-200 psi/kPa	PCRGB2706
	300 psi	PCRGB2507	0-300 psi/Bar	PCRGB2607	0-300 psi/kPa	PCRGB2707
	600 psi	PCRGB2508	0-600 psi/Bar	PCRGB2608	0-600 psi/kPa	PCRGB2708
	1000 psi	PCRGB3509	0-1000 psi/Bar	PCRGB3609	0-1000 psi/kPa	PCRGB3709
	1500 psi	PCRGB3510	0-1500 psi/Bar	PCRGB3610	0-1500 psi/kPa	PCRGB3710
	2000 psi	PCRGB3511	0-2000 psi/Bar	PCRGB3611	0-2000 psi/kPa	PCRGB3711
	3000 psi	PCRGB3512	0-3000 psi/Bar	PCRGB3612	0-3000 psi/kPa	PCRGB3712
5000 psi	PCRGB3513	0-5000 psi/Bar	PCRGB3613	0-5000 psi/kPa	PCRGB3713	